

YEAR

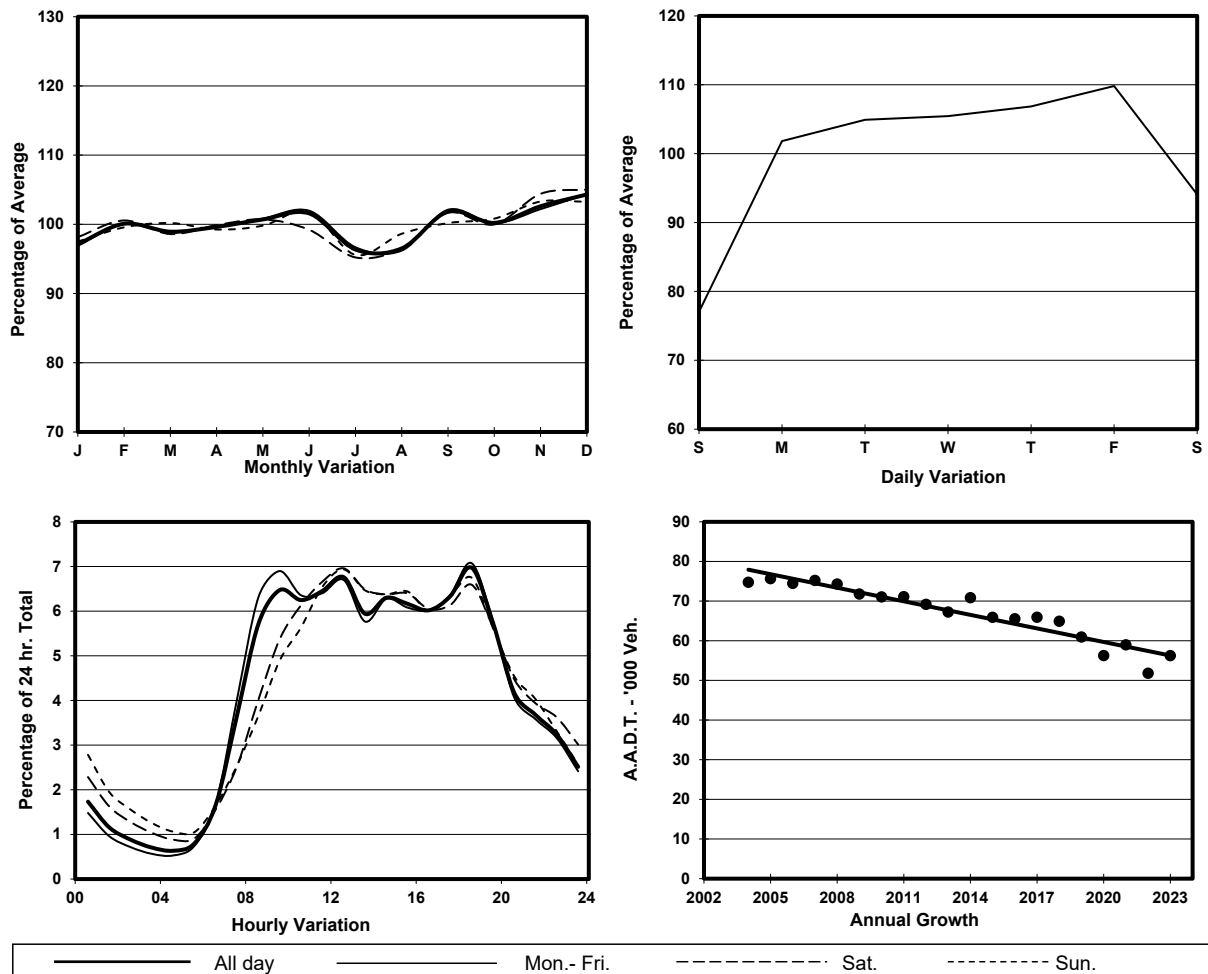
2023

LINK

QUEENSWAY (from RODNEY ST to QUEEN'S RD E)

CORE STATION
ROAD NETWORK
ROAD TYPE1007
MAJOR
PRIMARY DISTRIBUTOR

1. TRAFFIC FLOW VARIATION AND GROWTH



2. TRAFFIC CHARACTERISTICS (BY DIRECTION)

Parameter	All - Day	Mon. - Fri.	Sat.	Sun.
EAST BOUND				
A.A.D.T.	36340	39250	34040	27440
R 12 / 24 - %	74.3	75.6	70.4	69.4
R 16 / 24 - %	90.3	91.4	87.6	86.1
AM Peak Hour	0900-1000	0900-1000	0900-1000	0900-1000
One-way flow at AM peak hour	2420	2770	1920	1410
T - % (AM)	-	12.1	-	-
PM Peak Hour	1800-1900	1800-1900	1800-1900	1800-1900
One-way flow at PM peak hour	2500	2720	2240	1890
T - % (PM)	-	10	-	-
Prop.of commercial vehicles - 16 hr.	-	12.9	-	-
WEST BOUND				
A.A.D.T.	19880	21020	19590	16370
R 12 / 24 - %	70.9	71.9	68.6	67.3
R 16 / 24 - %	89.2	90	87.2	86.2
AM Peak Hour	0900-1000	0900-1000	0900-1000	0900-1000
One-way flow at AM peak hour	1220	1390	960	740
T - % (AM)	-	14.7	-	-
PM Peak Hour	1800-1900	1800-1900	1800-1900	1800-1900
One-way flow at PM peak hour	1420	1540	1300	1070
T - % (PM)	-	21.4	-	-
Prop.of commercial vehicles - 16 hr.	-	19.2	-	-

3. OTHER INFORMATION AND COMMENT

4. Vehicle classification and occupancy - Monday to Friday

Time		Class of vehicle									
		Motor Cycle	Private Car	Taxi	Private LB	PLB	Goods veh.		Non Fr. Bus	Fr. Bus	
							Light	M & H		SD	DD
0700-0800	Pro	1.7	25.9	32.9	1.0	3.7	8.9	0.2	5.9	0.3	19.4
	Ocp	1.0	1.4	1.9	7.3	11.3	1.4	1.0	12.6	11.8	20.8
0800-0900	Pro	2.8	44.3	25.2	0.9	1.4	5.3	0.4	4.4	0.2	15.0
	Ocp	1.0	1.4	1.9	3.4	12.4	1.4	2.0	13.5	11.7	27.2
0900-1000	Pro	1.5	49.3	25.7	0.2	0.9	9.6	0.7	1.7	0.2	10.2
	Ocp	1.1	1.4	1.8	3.0	8.2	1.6	1.4	9.5	12.0	21.6
1000-1100	Pro	3.1	41.2	29.8	0.1	1.2	12.2	1.9	0.7	0.2	9.6
	Ocp	1.0	1.3	1.8	1.0	10.0	1.4	1.6	10.2	14.8	18.5
1100-1200	Pro	4.4	47.1	24.0	0.1	1.4	12.3	0.4	0.6	0.2	9.5
	Ocp	1.0	1.5	2.0	1.0	11.5	1.5	1.7	8.6	12.4	18.9
1200-1300	Pro	5.7	46.7	25.4	0.5	1.5	8.9	0.7	0.9	0.2	9.6
	Ocp	1.0	1.3	1.6	2.8	11.4	1.3	1.5	2.9	12.3	17.7
1300-1400	Pro	5.0	41.7	28.9	1.6	1.3	10.5	0.3	0.9	0.2	9.6
	Ocp	1.0	1.5	2.0	3.6	12.0	1.5	1.5	3.6	11.7	18.2
1400-1500	Pro	2.9	46.6	27.2	0.0	1.1	10.3	0.9	0.5	0.3	10.1
	Ocp	1.0	1.6	2.0	0.0	12.0	1.7	1.6	15.0	13.8	20.2
1500-1600	Pro	5.7	43.1	22.3	1.2	2.5	8.8	0.3	3.9	0.3	11.8
	Ocp	1.1	1.4	1.7	4.6	11.4	1.5	1.5	13.5	16.3	21.6
1600-1700	Pro	2.5	52.2	22.1	0.7	1.8	5.3	0.5	2.7	0.3	11.9
	Ocp	1.0	1.5	2.0	2.2	12.2	1.6	2.3	13.0	14.6	24.5
1700-1800	Pro	2.5	45.1	28.9	0.1	1.9	3.3	0.0	2.2	0.3	15.6
	Ocp	1.1	1.4	1.9	3.0	13.1	1.4	0.0	5.4	20.7	32.1
1800-1900 Peak hour	Pro	4.1	50.1	30.0	0.2	1.1	1.3	0.1	1.1	0.2	11.7
	Ocp	1.0	1.5	2.2	7.0	13.9	1.2	2.0	10.5	26.6	33.6
1900-2000	Pro	4.5	51.6	28.5	0.1	0.8	1.5	0.0	1.3	0.2	11.5
	Ocp	1.0	1.3	2.1	1.0	12.8	1.2	0.0	6.1	18.8	30.0
2000-2100	Pro	5.0	40.4	36.6	0.2	1.1	1.4	0.5	0.7	0.3	13.8
	Ocp	1.0	1.6	1.9	1.0	10.3	1.4	1.0	3.5	11.3	18.8
2100-2200	Pro	3.3	31.8	42.8	0.5	0.9	2.1	0.2	0.9	0.2	17.1
	Ocp	1.0	1.4	2.0	7.0	12.3	1.3	2.0	5.0	11.0	19.1
2200-2300	Pro	2.6	32.8	41.0	0.3	1.5	2.6	0.5	1.3	0.3	17.2
	Ocp	1.0	1.6	1.9	3.0	15.0	1.4	1.5	4.6	8.8	17.4
16 hours	Pro	3.6	44.6	28.4	0.5	1.4	6.8	0.5	1.8	0.2	12.1
	Ocp	1.0	1.4	1.9	3.8	11.8	1.5	1.6	10.3	14.8	23.2

Legend: Pro. Proportion of vehicles in % (Sum may not add up to 100% due to figure rounding)*

Ocp. Average occupancy of vehicles including both driver and passengers*

M&H Medium and Heavy

* All traffic data are collected from combined bounds